

South Berwick Non-Binding Survey on Marijuana Establishments

October/November 2018

Q1. How did you vote on the 2016 Maine Marijuana Legalization ballot item?

- A 'yes' vote supported legalizing recreational marijuana for adults over 21
- A 'no' vote opposed this proposal to legalize recreational marijuana

Yes

No

I did not vote

I do not remember

Adult Use Marijuana (also known as recreational or non-medical marijuana)

A1. Do you support an adult-use marijuana cultivation facility in South Berwick?

Definition: *facility licensed to grow and process marijuana for adult use*

Yes No

A2. Do you support an adult-use marijuana manufacturing facility in South Berwick?

Definition: *facility licensed to manufacture, label, and package adult use marijuana and adult use marijuana products including the extraction, production, blending, infusing and compounding of products*

Yes No

A3. Do you support an adult-use marijuana testing facility in South Berwick?

Definition: *facility licensed to develop, research, and test adult use marijuana, marijuana products, and other substances*

Yes No

A4. Do you support an adult-use retail marijuana store in South Berwick?

Definition: *facility licensed to sell adult-use marijuana and marijuana products to consumers*

Yes No

Refer to **color-coded town map** for the following questions. Mark all that apply.

A5. Which of the following adult-use facilities do you support in the BUSINESS ZONES (blue)?

Cultivation facility

Testing facility

Manufacturing facility

Retail marijuana store

None

A6. Which of the following adult-use facilities do you support in the INDUSTRIAL ZONES (yellow)?

Cultivation facility

Testing facility

Manufacturing facility

Retail marijuana store

None

A7. Which of the following adult-use facilities do you support in the RESIDENTIAL ZONES (orange)?

Cultivation facility

Testing facility

Manufacturing facility

Retail marijuana store

None

Continue on back →

Medical Marijuana (marijuana to treat a qualifying medical condition)

M1. Do you support a medical marijuana registered caregiver retail store in South Berwick?

Definition: *facility or location in which a registered medical marijuana caregiver sells marijuana to qualifying patients for the patients' medical use through a storefront*

Yes No

M2. Do you support a medical marijuana registered dispensary in South Berwick?

Definition: *facility licensed to acquire, possess, cultivate, manufacture, deliver, transfer, transport, sell, supply, or dispense marijuana to qualifying patients and caregivers of those patients*

Yes No

M3. Do you support a medical marijuana testing facility in South Berwick?

Definition: *facility licensed to test marijuana and marijuana products for contamination, potency, and profile*

Yes No

M4. Do you support a medical marijuana manufacturing facility in South Berwick?

Definition: *facility licensed to produce, blend, infuse, compound or otherwise prepare marijuana concentrate and products*

Yes No

Refer to **color-coded town map** for the following questions. Mark all that apply.

M5. Which of the following medical facilities do you support in the BUSINESS ZONES (blue)?

- Registered caregiver retail store
- Testing facility
- None

- Registered dispensary
- Manufacturing facility

M6. Which of the following medical facilities do you support in the INDUSTRIAL ZONES (yellow)?

- Registered caregiver retail store
- Testing facility
- None

- Registered dispensary
- Manufacturing facility

M7. Which of the following medical facilities do you support in the RESIDENTIAL ZONES (orange)?

- Registered caregiver retail store
- Testing facility
- None

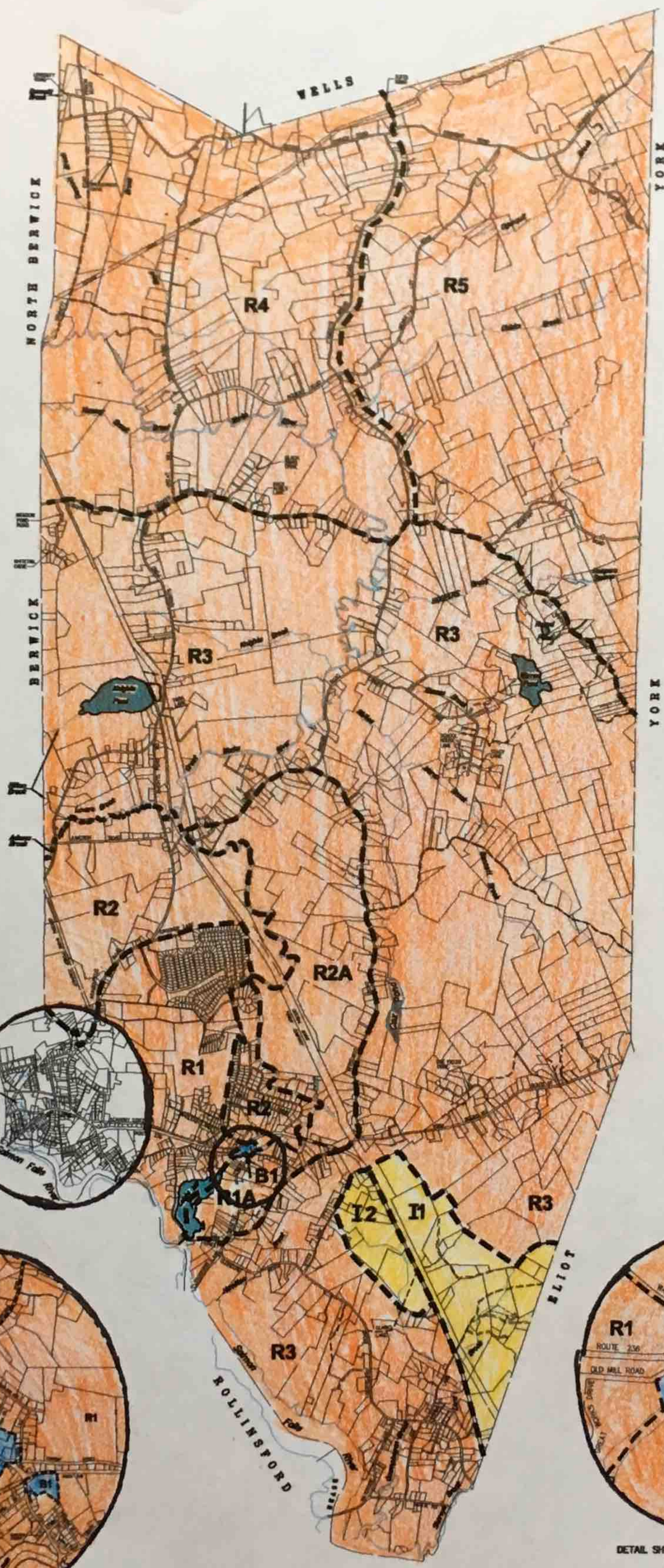
- Registered dispensary
- Manufacturing facility

Thank you for participating in this survey!

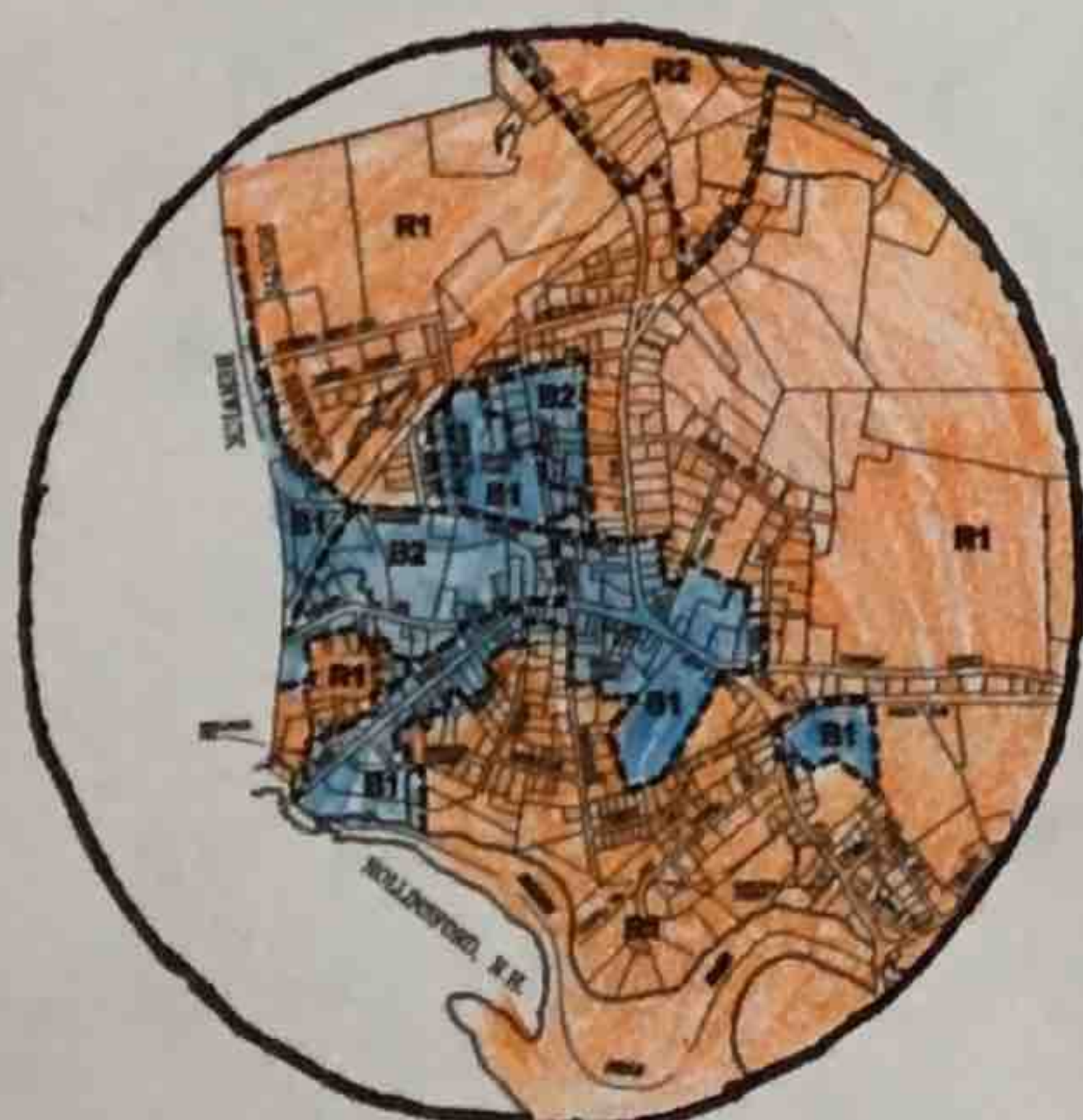
Town Manager: Perry Ellsworth

Town Councilors: Jack Kareckas, John James, Russ Abell, Tom Chase, Mallory Cook

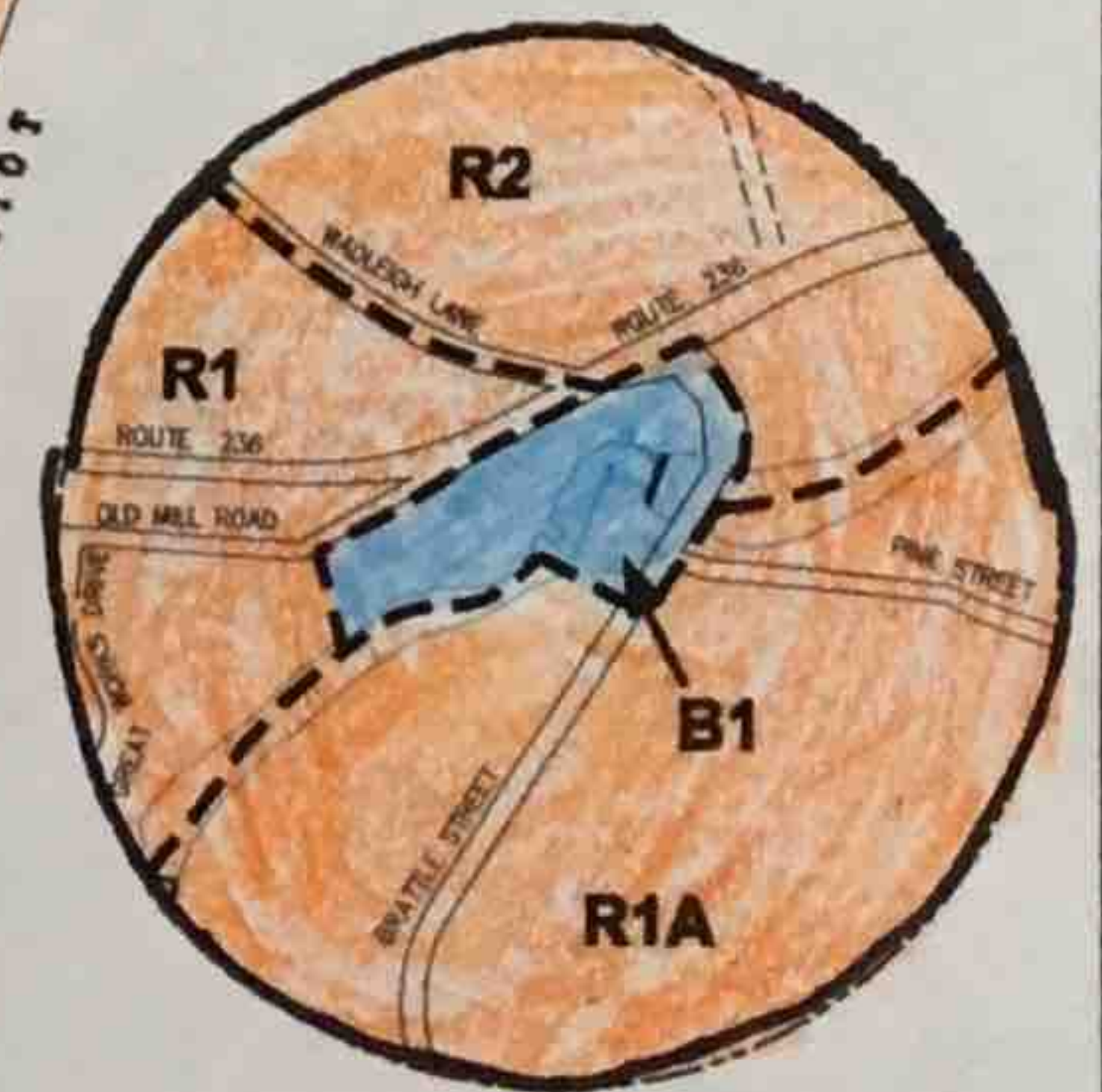
- SECTION 140-10. ZONING DISTRICTS
- RESIDENTIAL ZONES
- R1 VILLAGE RESIDENTIAL DISTRICT
 - R2 VILLAGE RESIDENTIAL, DOWNS DISTRICT
 - R3 DEVELOPING RESIDENTIAL DISTRICT
 - R4 SUBURBAN RESIDENTIAL DISTRICT
 - R5 TRANSITIONAL RESIDENTIAL DISTRICT
 - R6 RURAL RESIDENTIAL DISTRICT
 - R7 RURAL OVERLAY ZONE (R1 AND R2 DISTRICTS)
- BUSINESS ZONES
- B1 COMMERCIAL DISTRICT
 - B2 MEDICAL DISTRICT
- INDUSTRIAL ZONES
- I1 INDUSTRIAL ZONE
 - I2 INDUSTRIAL ZONE



- LEGEND:
- Blue shaded area: WATER BODIES
 - Thick black line: ZONING BOUNDARY
 - Thin black line: ZONING DISTRICT
 - Thin grey line: TOWN LINE
 - Thin black line: STREET



DETAIL SHOWING VILLAGE ZONING
NOT TO SCALE



DETAIL SHOWING B1 ZONE COMMERCIAL SETBACK
IN SOUTH BERWICK VILLAGE
NOT TO SCALE

- NOTES:
1. THIS MAP IS BASED ON THE TOWN OF SOUTH BERWICK PROPERTY MAPS. IT IS INTENDED FOR REFERENCE AND PLANNING PURPOSES ONLY.
 2. THIS ZONING MAP DOES NOT DEPICT OVERLAY DISTRICTS OR WELL HEAD PROTECTION DISTRICTS.

CHAIRMAN OF THE TOWN COUNCIL

TOWN CLERK

DATE



DESIGN JAA/DHO
DATE 04 DECEMBER 2008
CHECKED
APPROVED
SCALE NOT TO SCALE

TOWN OF SOUTH BERWICK
YORK COUNTY, MAINE

ZONING
MAP